

# SIAT Series Fixed Industrial Thermal Imaging Camera



## Auto Focus. 24x7 Temperature Monitoring Camera

The **SIAT Series** Industrial fixed Cameras are workhorses for industrial customer requiring **24 x 7 High 1** monitoring for :

- **Process Control, Quality Control, R&D etc**
- **Laser Processing Monitoring,**
- **Warehousing Safety,**
- **Monitoring Of Factory Assembly Lines**

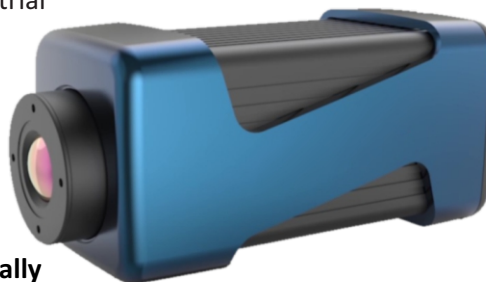
The SIAT Series cameras can **detect & notify** an operator of any **impending problems via usage of alarms. An operator can manually set alarms with specific temperature range.**

The **SIAT Series Thermal Cameras** is available in two variants :

**SIAT30 : Auto focus @ 384 x 288 thermal resolution**

**SIAT60 : Auto focus @ 640 x 512 thermal resolution**

Both offering temperature range **-20°C~+550°C**, provides rich details at distances **0~20 meters** (\*depending on lens configured at time of ordering) for detecting abnormality in temperature to the tune of **0.04°C**.



Alarm/warning mode

Remote access

Pixel: 14um

Temp range  
-20°C~+550°C

Interchangeable lens options

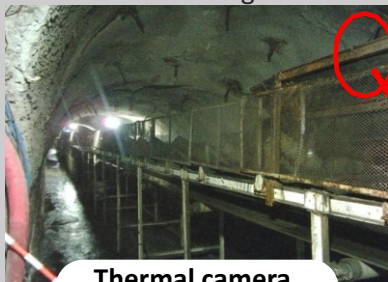
NETD : <50mk

Accuracy  
+2% or +2%°C

## SIAT SERIES | Fixed Thermal Imaging Camera Why & Where :

### COMPACT & EASY TO INSTALL

The **SIAT** measures only **55mm x 55mm x 110mm**, making it easy to install in space constrained areas for uninterrupted condition monitoring.



Thermal camera installation position



**Optional lenses of various focal lengths.** with lens options for viewing thermal images of monitoring of objects at different depths & distances.

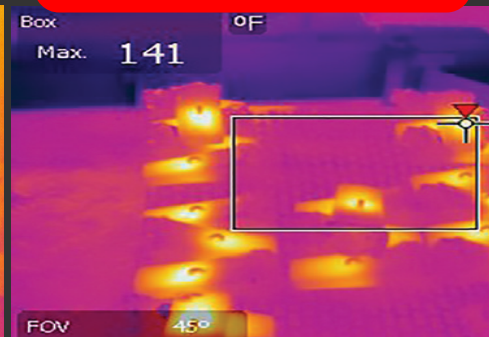
**\*Configured prior supply**

### PROCESS CONTROL & QUALITY ASSURANCE

#### SIAT Installed on Conveyor belt



#### Metal manufacturing process

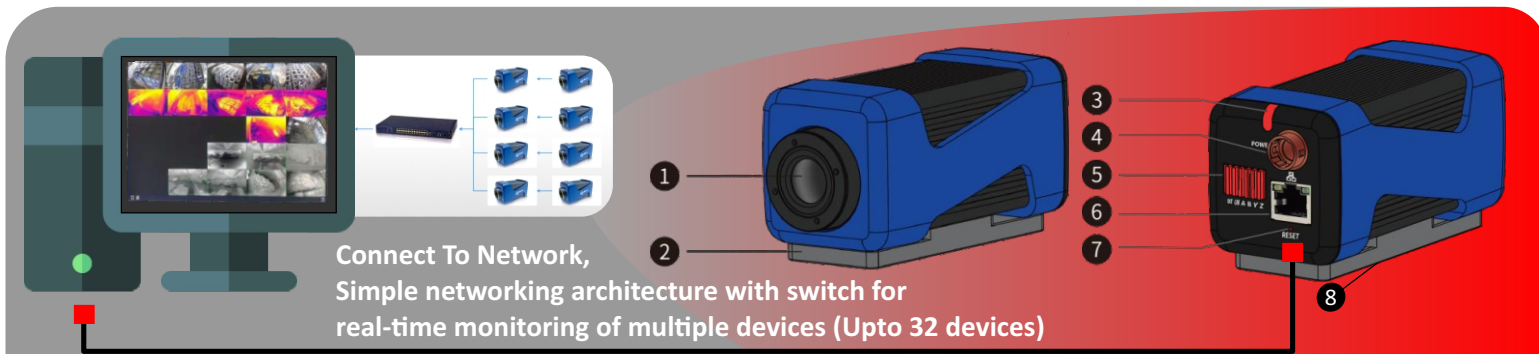


**Process Control Monitoring, R&D, Quality Assurance, Manufacturing & Industrial Processes** is all about measuring the temperature and or determining the shape of certain products on a production line.

The **SIAT Series IR Cameras** Offers temp range of **-20°C~550°C @ 384 x 288 & 640 x 512** resolution which makes it ideal for **detecting defects in minutest spots** in any manufacturing or industrial processes.

The **SIAT** can display rich details at distances **0~20 meters**, will monitor **highest, lowest & average temperature** of the entire frame/region monitored with **separate alarm output actions**. Capable to **protect assets, improve safety, maximize uptime, and minimize maintenance costs.**

# SIAT Series Fixed Industrial Thermal Imaging Camera



## Specifications :

Model	SIAT 30	SIAT 60
Detector type	Vox uncooled infrared FPA detector	
Detector resolution	384 x 288	640 x 512
Spectral band	8~14μm	
Pixel size	14μm	
Thermal sensitivity (NETD)	<50mK(40mK is optional)	
FOV	Depending on lens configured	
Frame rate	25Hz	
Focusing mode	Auto-focus (electric focusing lens)	
Measurement range	-20°C~+550°C	
Measurement accuracy	±2°C or ±2%	
Measurement resolution	0.1°C	
Color palettes	18	
Temperature measurement tools	Fixed/centre, highest lowest temperatures, line & area monitoring	
Image viewing modes	Thermal imaging, DDE	
Video format	Mp4, mov	
External connectivity	External NVR*	
Connectivity protocols	ONVIF, Pelco & RTSP	
LAN protocols	TCP, UDP, ICMP, DHCP	
Network interface	RJ45	
Internal interface	1 x M12 Pin RJ45 GBE to switch or PC, 1 x RS422, analogue video output, 1 x RS485 (optional)	
Online viewing	Web management interface	
Alarm mode	I/O Alarms	
Alarm output	I/O output, log, save image, file sending (FTP), E-mail (SMTP) notification	
Power supply	10~36VDC/ ≤3W	
Operating storage temp	-20°C~+60°C / -45°C~+85°C	
Ingress protection	IP54	
Dimension & weight	55mm x 55mm x 110mm   430+/-5g (without adapter bracket)	

No.	Explanation
1.	Infrared lens
2.	Adapter bracket
3.	LED light
4.	Power Interface
5.	Data Interface
6.	Ethernet/Network cable Interface
7.	Reset button
8.	Installation holes for tripod & other accessories



**Modbus protocol** : SIAT supports modbus TCP protocol for transmitting temperature information.



## Focal length & distance options

SIAT30 384 x 288			SIAT60 640 x 512		
Focal length	FOV (HxV)	Distance	Focal length	FOV (HxV)	Distance
7.8mm	47°x35.6°	1~10m	7.8mm	47°x35.6°	1~10m
13mm	29.6°x22°	2~15m	13mm	29.6°x22°	2~15m
15mm	25°x18.7°	2~20m	15mm	25°x18.7°	2~20m
19mm	19.6°x14.7°	2~20m	19mm	19.6°x14.7°	2~20m
25mm	14.8°x11.1°	2~20m	25mm	14.8°x11.1°	2~20m